



EST 1892

LSBU
London South
Bank University



OnCampus

London South Bank University





LSBU
London South
Bank University



Teaching
Excellence
Framework



Value for money

With its supportive environment and strong focus on real-world learning, LSBU offers an exceptional and budget-friendly student experience in one of the world's most exciting cities.



High rankings in employability

LSBU boosts student employability through career support, industry placements, and professional development. It's no wonder LSBU graduates earn the highest average salaries among London Modern universities (LEO 2025).

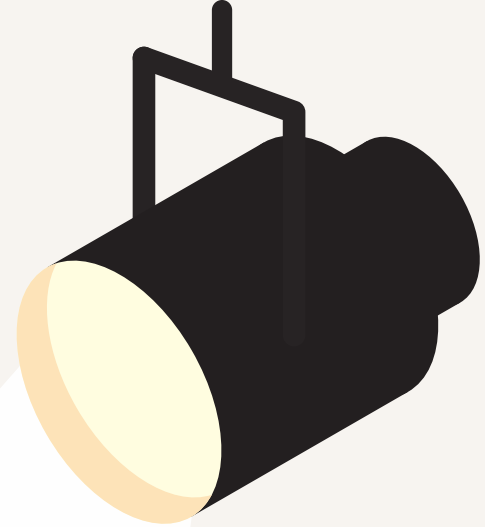


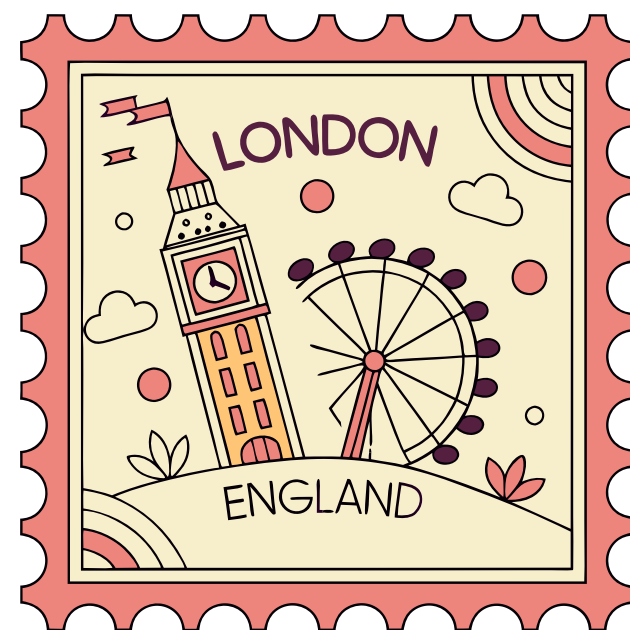
Study in London

With a rich history, vibrant arts scene, and countless museums and libraries, students can enjoy both academic excellence and cultural enrichment in the QS 2025 world's best student city



OnCampus





World's Best
Student City
QS 2025





Home to over 200 museums

including the British Museum, National History Museum, Tate Modern, V&A Museum.



More than 125,000 students

are studying in London.



Over 80 restaurants

within the local area, including Indian, Thai, Italians and many more...



Home to top cultural venues

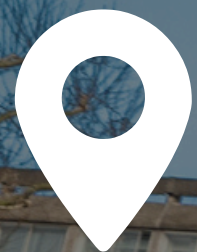
such as the national theatres, Southbank Centre, London Eye and the British Film Institution.



Student life

University lectures, faculty visits and experience days will help you get the most out of academic life in London.





London

Campus and surroundings





London

Campus and surroundings

- 1 LSBU campus (Southwark)
- 2 OnCampus London South Bank
- 3 Tate Modern
- 4 London Eye
- 5 Big Ben
- 6 Shakespeare's Globe
- 7 Borough Market
- 8 The Shard





LSBU
London South
Bank University

EST 1892

Southwark campus

Location

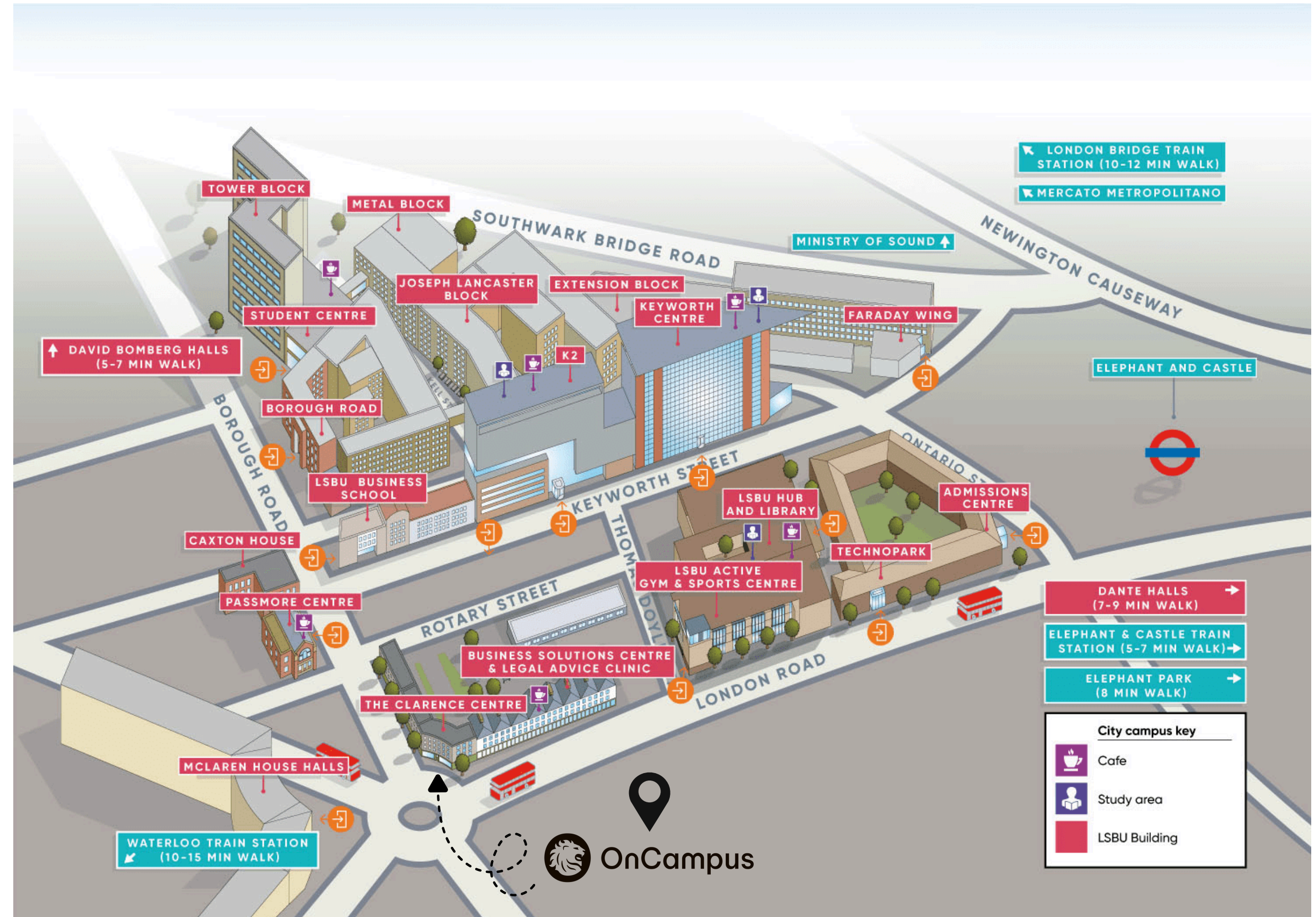
The University is located on a single campus in central London; in the historic, vibrant and unique Elephant and Castle, just minutes from the centre of London.

Population

LSBU is a cosmopolitan university with over 25,000 students, from over 130 countries and a global alumni network of over 80,000.

Foundation

LSBU is one of London's largest and oldest universities.





Value for money

Study in the UK with excellent value, quality education and student experience!

- The UK's capital is a large and bustling city, that still can offer affordable study options for students
- Degree tuition fees from £17,600
- Scholarships of up to £7,000 per year (conditions apply)

Free things to do in London

- Visit Tate Modern
- Discover the National Poetry Library
- Stop by the Imperial War Museum
- Check Out the Southbank Centre
- Visit the Guildhall Art Gallery and Roman Amphitheatre
- Walk along the Queen's Walk
- Explore the Leake Street Graffiti Tunnel
- Relax at Jubilee Gardens



LSBU
London South
Bank University

EST 1892

London South Bank University



LSBU
London South
Bank University

EST 1892

« CHECK IN POINT

Subjects at London South Bank University



EST 1892

LSBU
London South
Bank University



OnCampus



Business

- **Learn in-demand skills:** Curriculum co-created with businesses for graduate-ready knowledge.
- **Network with industry leaders:** 50+ guest speakers & events annually.
- **Expert faculty:** Passionate professors guide your academic journey.
- **London's business hub:** Access to top internships & job opportunities.
- **Thrive with support:** Dedicated career centre & student resources.

6th
in the UK
for Economics

Guardian University Guide 2025

96%
of graduates in work or
further study within 6 months

LSBU Graduate Outcomes Survey 2023



Engineering

#1 UK Student Satisfaction in Chemical Engineering

Complete University Guide 2023

95% Employed or Further Study

Engineering Graduates

LSBU Graduate Outcomes Survey 2023)

£1.4M

3D Virtual
Engineering Lab
(Cutting-edge
Facilities)

£30K+

**Starting Salary
(Engineering
Graduates)**

Guardian University Subject Rankings 2024



Social Sciences & Humanities

- **Critical Thinking:** Develop analytical skills to solve complex social issues.
- **Globalized World:** Explore diverse cultures and perspectives in a changing world.
- **Make a Difference:** Prepare for careers that shape a more just and sustainable society.

International
Relations is
ranked 9th
in the UK

Guardian University Guide 2024

3rd
for Forensic
Science

Guardian University Guide 2025



Health and Life Sciences

- **Cutting-Edge Research:** Be part of a vibrant research community tackling global health challenges.
- **Exceptional Teaching:** Renowned faculty with real-world experience guide your learning.
- **Specialised Programs:** Explore diverse fields like Biomedical Science, Pharmacy, and Psychology.
- **Career Ready:** Develop the skills and knowledge for success in healthcare and life sciences.

1st in
Optometry
BSc/MOptom
and Allied
Health
graduate
salaries

10th
in the UK Health
professions

Guardian University Guide Subject Rank 2024



Computer Science

- Students will work with multiple operating systems throughout the curriculum — including Windows, Ubuntu, Raspbian OS, and Kali Linux — gaining practical experience across platforms widely used in both industry and research.
- Get hands-on experience with industry-standard software, and develop in-demand data skills and master tools such as SAS, Tableau, Power BI and Python.

**90% of students
highly rate the
teaching on
Computer
Science course**

(NSS 2025)

**All courses are accredited
or developed in
partnership with the
leading professional
accrediting bodies – in
particular the Chartered
Institute for IT (BCS).**

LSBU CareerSmart

CareerSmart builds careers into courses from day one with expert 1-to-1 advice and careers built into the curriculum to get students started.



EST 1892

LSBU
London South
Bank University

LSBU CareerSmart



Courses fit for careers

- Embedded employability modules
- Live briefs and real world case studies
- Strong academic links with industry



Support shaped for students

- Access to personalised and AI-powered support
- Employability skills certification
- CareerSet: AI-powered career tools, like CV feedback and cover letter support
- Gamification of interviews and psychometric tests



Supercharge skills

- Test skills through practical assessments
- Personalised Career Development Dashboard
- Free access to LinkedIn Learning
- Mentoring opportunities
- Industry-standard facilities



Get ahead with industry

- Grow connections with industry professionals and undertake placements
- Guest lectures from leaders in industry
- Networking opportunities
- Placements, internships and micro-experiences
- Employability workshops



Unleash the inner entrepreneur

- Learn how to start a business and build industry profile
- South Bank Starters
- Entrepreneurial workshops
- Professional LinkedIn headshots

LSBU students work with...



L'Oreal



BMW



HSBC



Unilever



NHS



Land Rover



Deloitte



Tesco



P&G



E.ON



IBM



Aldi

Why Foundation?

Why Foundation?

Foundation courses are an increasingly popular way to enter into university undergraduate degree programmes in the UK. A foundation programme offers several benefits for students, such as:



1

Providing students with a strong academic foundation which will help them succeed at university.

2

Developing essential study skills such as critical thinking, research, and analysis.

3

Increasing the chances of being accepted into a desired university programme.

4

Providing a pathway for students who are unsure about their desired career path, allowing them to explore different subjects and areas of interest.

Foundation explained

They are courses designed specifically for international students to help them attain the right level of qualifications and skills they need to succeed at UK university degree level.

Typically available as an intensive two or three-semester programme of academic subjects, study skills and English language preparation.

The Foundation courses at OnCampus London South Bank offer a range of proven and practical benefits for international students.

The following slides highlight 7 of them



1: Designed for international students

International students face unique challenges when they get to UK universities. These courses are specifically designed to address the needs of students from all over the world. They're tailored to students to ensure that they are academically ready and personally confident enough to take on and succeed at an undergraduate course at a UK university.



2: Fills any gaps in knowledge between high school and university

Education standards differ around the globe, from state to state and country to country. Teaching methods differ, the number of study hours varies, and qualifications differ too. OnCampus Foundation courses are designed to level out the differences and get all students up to standard.



3: Academic classes combined with English language

For many international students, language is the most daunting aspect of studying abroad. While your academic record may be excellent, if you aren't used to studying or speaking in English every day, or your English language qualifications aren't up to speed, you may struggle on a degree course taught in English to native English speakers. OnCampus Foundation courses can help you prepare, by providing focused training in the kind of academic English that will help you in your future degree studies.





4: Specialise in your chosen field

On a foundation course you can tailor your course to suit the degree programme you wish to study for in future. OnCampus London South Bank offers two distinct foundation programmes. They involve studying core modules common to each route, plus a set of subject-specific modules that are carefully designed to focus on the academic areas most useful to your chosen degree.



5: Get used to university-style teaching

As a graduate of a foundation course you'll have an advantage over students entering higher education straight from school. Foundation courses are taught using university-style teaching, often on-campus, with lectures, tutorials and seminar-style classes. This all helps prepare you better for your future university studies.



6: Time to adjust

Arriving at the place you want to study, two to three semesters before you begin your full degree programme, gives you plenty of time to settle into everyday life, not just academic life. It means you have time to make friends, soak up those cultural differences and practical things like finding your way around town. It puts you in touch with other students who are experiencing just the same fear and excitement as you, ensuring you're on a firm foundation when you begin your undergraduate course.



7: A guaranteed university place

You are issued a conditional university offer, alongside your OnCampus offer of a place and once you complete your foundation course and achieve the required grades, you'll be guaranteed entry into the first year of your chosen undergraduate degree at London South Bank University.

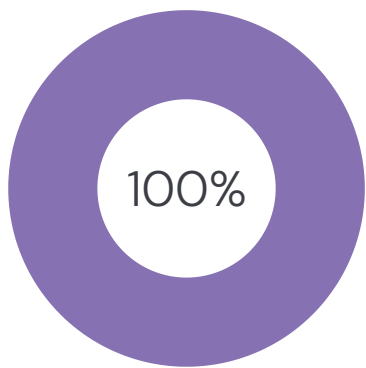




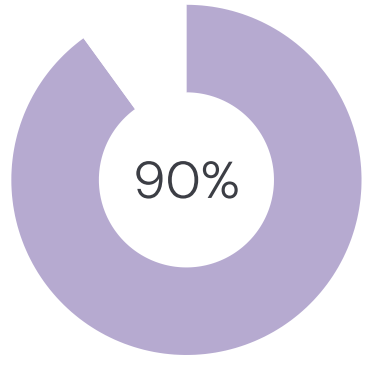
Celebrating the class of 2024/25



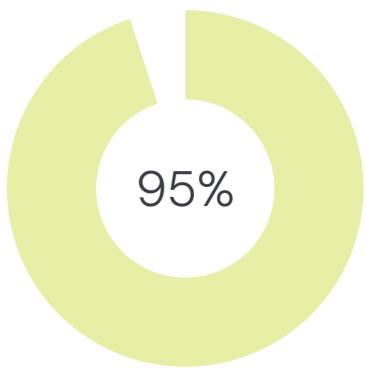
of OnCampus iCAS Undergraduate Foundation Programme students passed the programme in 2024



of UFP Humanities students were eligible for progression in 2025



of OnCampus International Year One Business students passed the programme in 2024

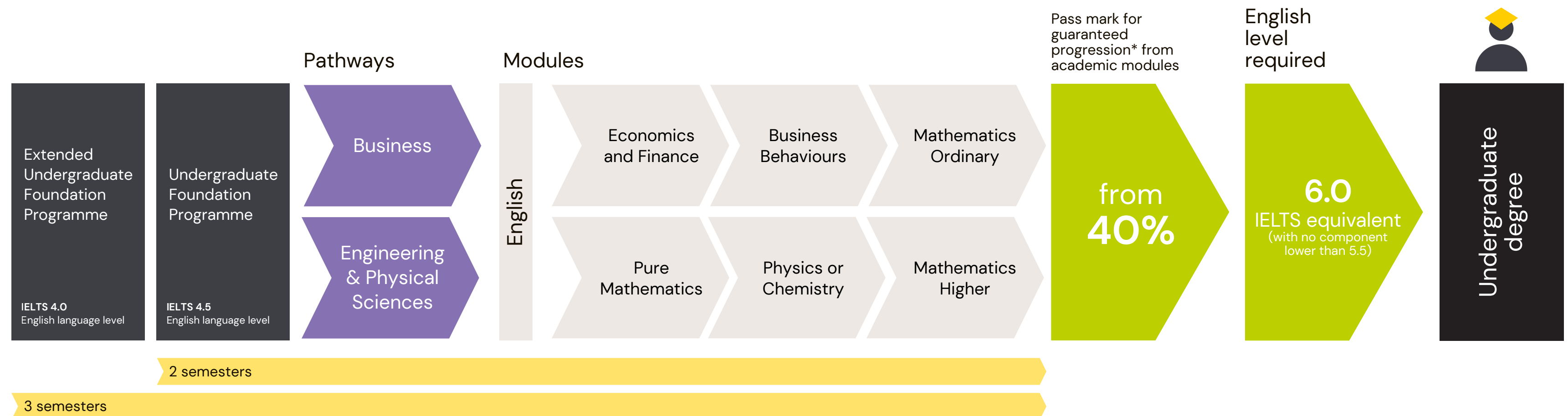


of OnCampus students would recommend OnCampus to a friend

93% of OnCampus students were satisfied with the quality of their study programme

How does it work?

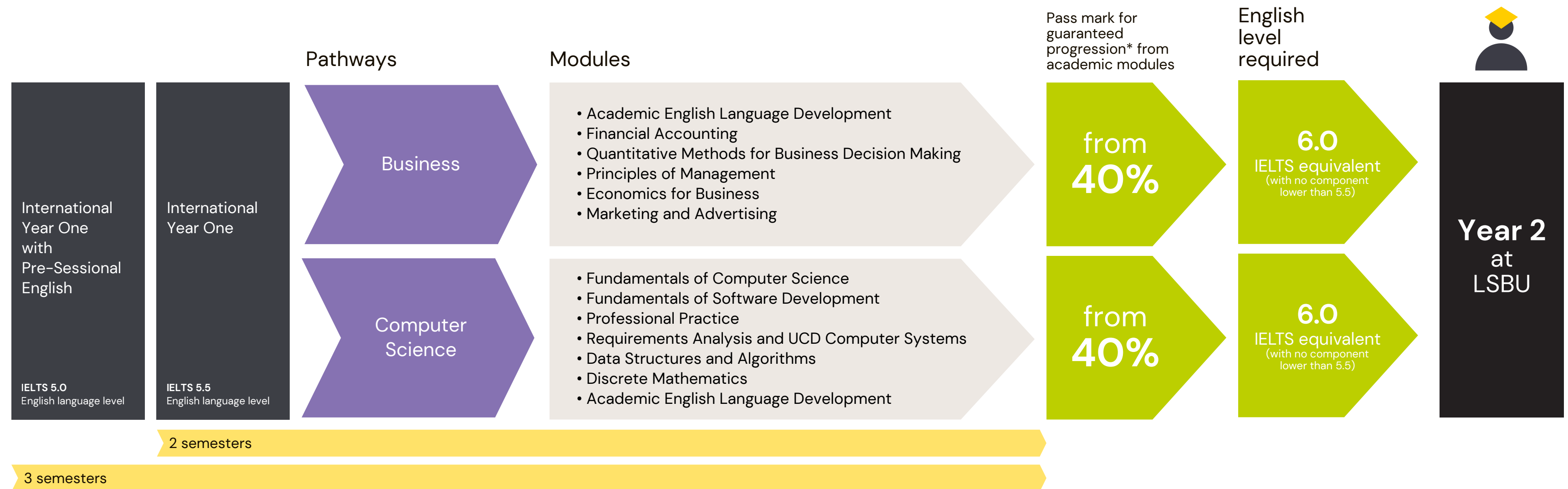
Undergraduate Foundation Programme (UFP)



*OnCampus London South Bank offers guaranteed progression to a wide range of undergraduate degrees at London South Bank University, on successful completion of the Undergraduate Foundation Programme.

How does it work?

International Year One (IY1)



*OnCampus London South Bank offers guaranteed progression to a wide range of undergraduate degrees at London South Bank University, on successful completion of the International Year One..



**Save up to £11,000 on
university tuition fees**

Scholarships are available for OnCampus students (UFP & IY1) who successfully complete the pre-university programme and progress to London South Bank University*.

Progression Scholarship **Up to £6,000**

£2,000 per year of study

*Other conditions may apply.



OnCampus Centre at LSBU



OnCampus

OnCampus Centre at LSBU



1 Intensive Academics

18–26 hours/week of classes tailored to your English & academic level.

2 Personalised Support

Weekly progress tracking with interventions and action plans.

3 Clear Expectations

40% pass mark with clear learning objectives.



Accommodation in London



OnCampus



Accommodation

Islington

- Onsite Gym, Cinema, games area, social & study spaces, 24h library, onsite laundry and 24h team.
- 40-minute commute to OnCampus

Studios & Ensuities:

from
£391.50
per week



Study space



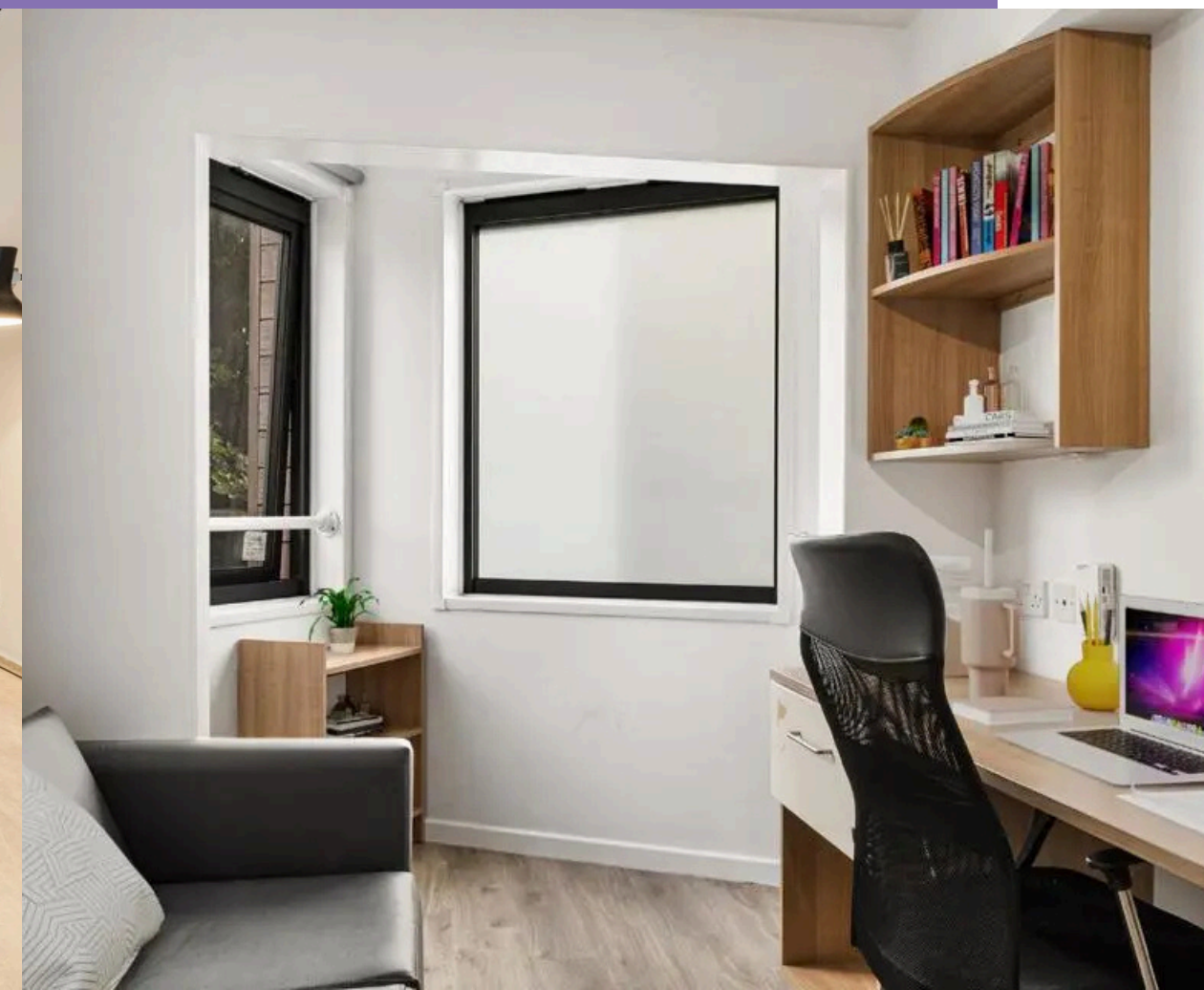
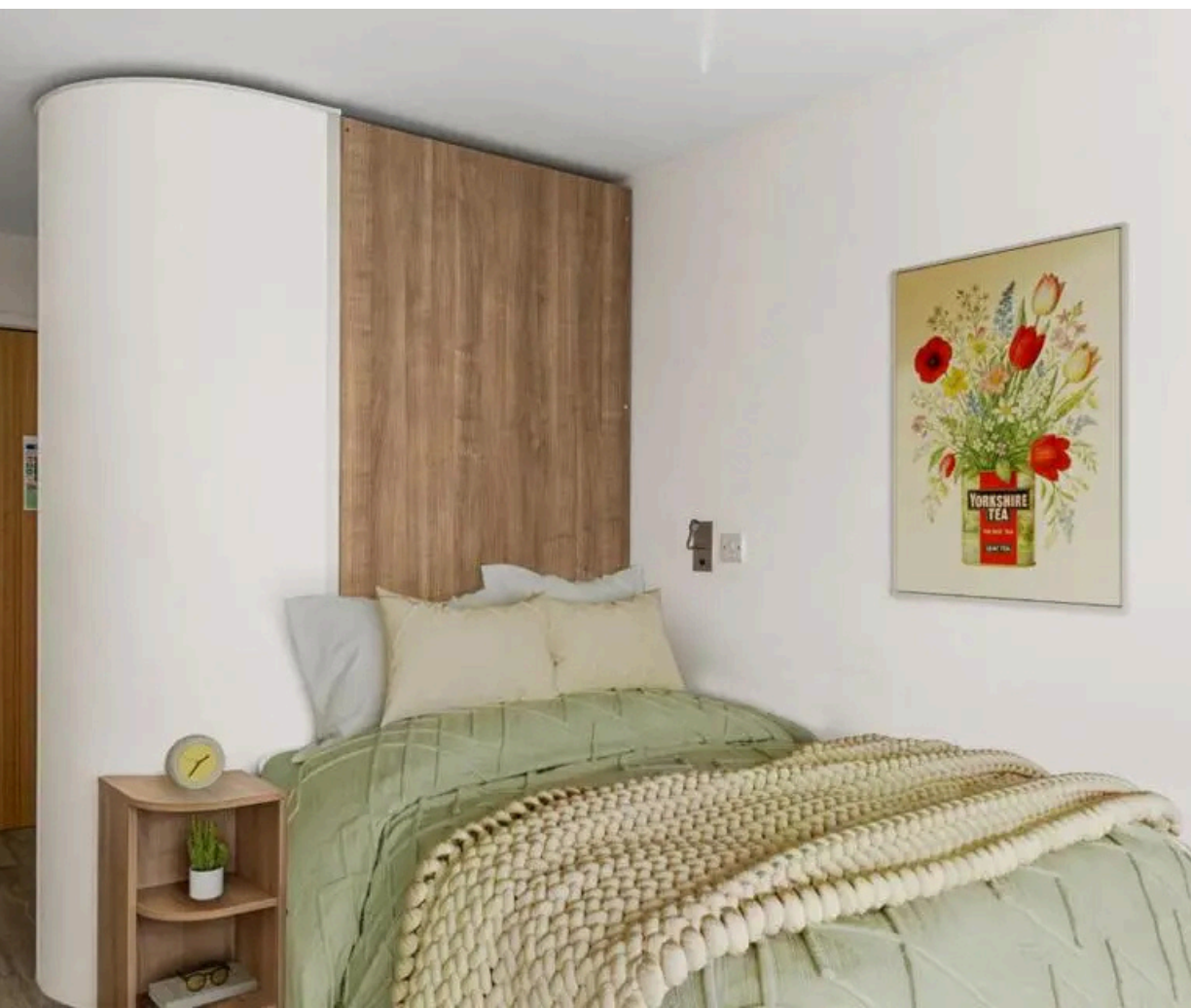
Short
commute to
centre



Laundry
facilities



24/7 security
and CCTV



Accommodation

Highbury II

- Onsite Gym, Cinema, social & study spaces, 24h library, onsite laundry and 24h team.
- 36-minute commute to OnCampus

Studios & Ensuities:

from
£462
per week



Study space



Short
commute to
centre



Laundry
facilities



24/7 security
and CCTV



Accommodation

King's Cross

- Gym & Yoga room, Cinema, social & study spaces, courtyard 24h library, onsite laundry and 24h team.
- 33-minute commute to OnCampus

**Studios,
Ensuites &
Apartments:**

from
£292
per week



Study space



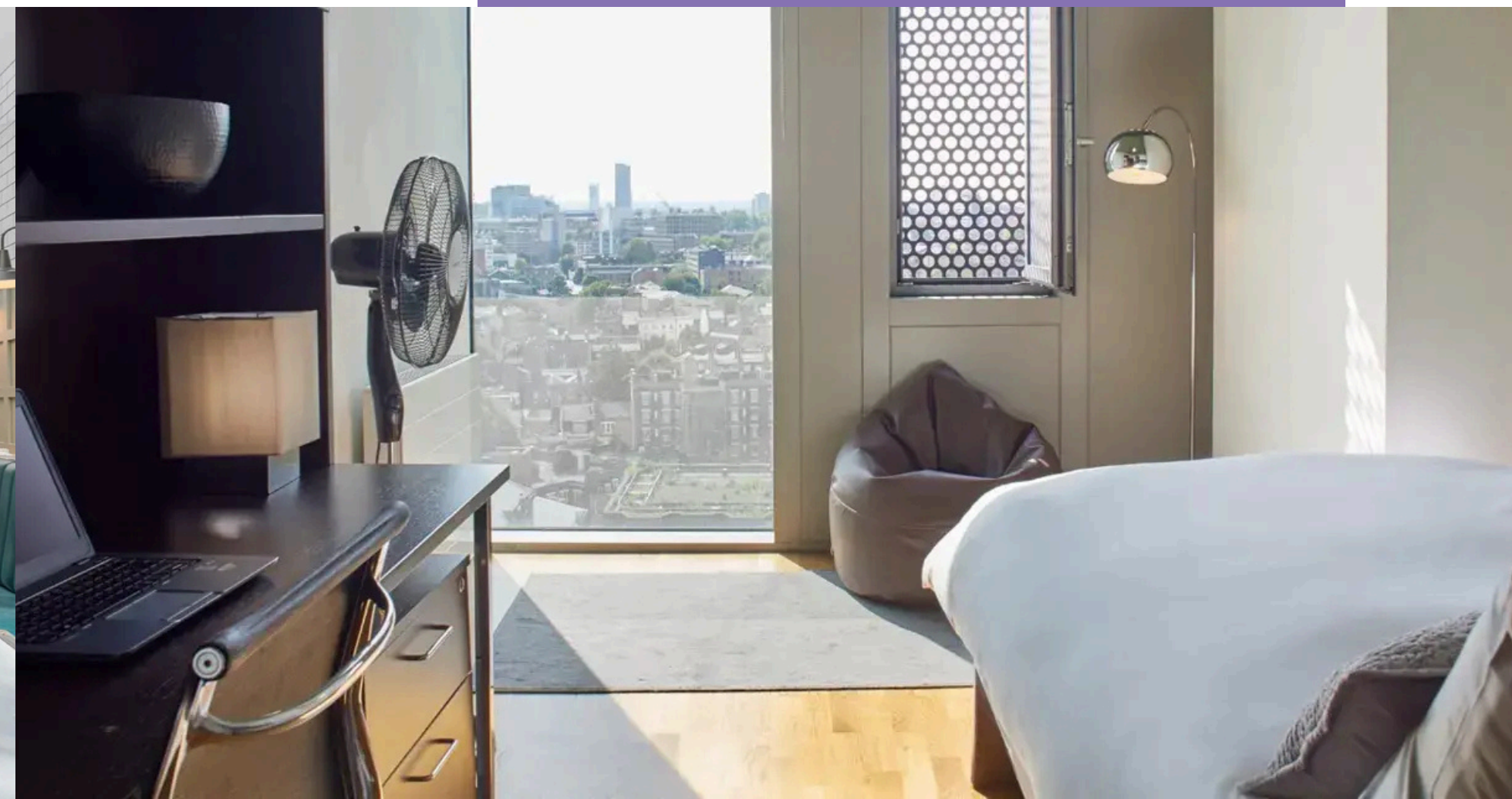
Short
commute to
centre



Laundry
facilities



24/7 security
and CCTV



Accommodation

Kentish Town

- Gym & Yoga room, Cinema, social & study spaces, courtyard 24h library, onsite laundry and 24h team.
- 38-minute commute to OnCampus

Studios & Apartments:

from
£404
per week



Study space



Short
commute to
centre



Laundry
facilities



24/7 security
and CCTV



Accommodation

Stay Club: Kentish Town & Camdem

- Gym & Yoga room, Cinema, social & study spaces, courtyard 24h library, onsite laundry and 24h team, rooftop terrace & on-site cafe.
- 37-minute commute to OnCampus

Studios & Suites:

from
£404
per week



Study space



Short
commute to
centre



Laundry
facilities



24/7 security
and CCTV



Accommodation

Raleigh House

- Unique converted townhouses
- Ensuite & shared bathroom options
- Large kitchen & lounge area
- Free laundry facilities
- Live-in community support staff

Ensuite:

£355.00
pppw



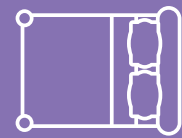
Study space



Large communal
kitchen



Laundry
facilities



Bed starter
pack





Thank you!



OnCampus